

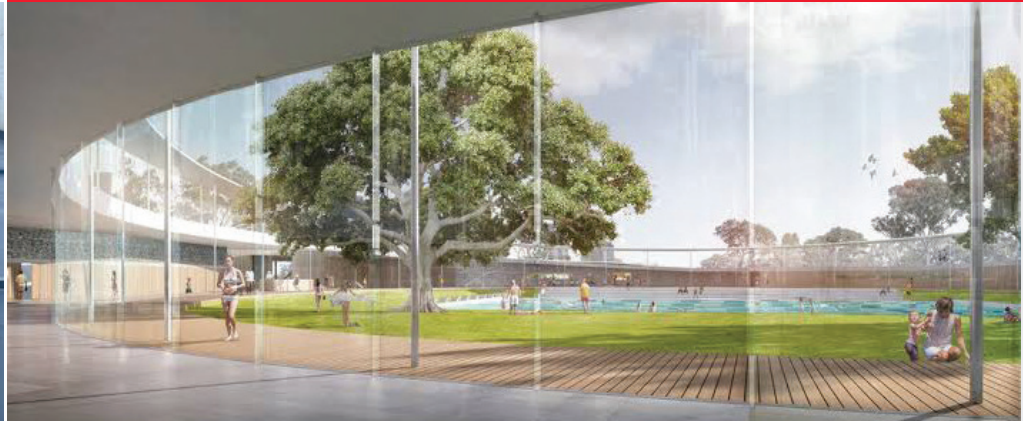


constructive solutions

# CASE STUDY

## Parramatta Aquatic Centre

### Sydney, NSW



CUSTOMER City of Parramatta  
 SPECIFIER Grimshaw Architects  
 CONTRACTOR Sure Projects Australia (SPA) & Lipman  
 SECTOR Public Buildings  
 DATE Project due for completion in 2023

#### PRODUCTS

- Fosroc Polyurea WHE110
- Fosroc Nitoflor PA

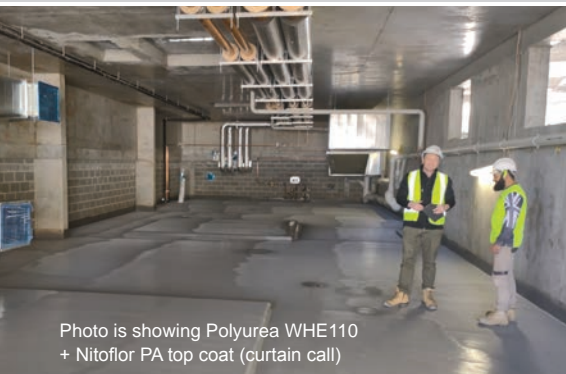


Photo is showing Polyurea WHE110 + Nitoflor PA top coat (curtain call)



Photo is showing application of Polyurea WHE110

**Serious waterproofing protection was required for the roof and plant room floors at this new community facility. Super efficient and tough, Polyurea WHE110 was the right choice for above ground and under foot.**

#### THE PROJECT

A low-rise design built into the landscape, the Parramatta Aquatic Centre integrates with its parkland surrounds. Grimshaw Architects' specification team called on Fosroc ANZ for a waterproofing solution for the single-level building. It houses two indoor pools and a water playground; steam, spa and sauna facilities; plus a gym, cafe and multipurpose community spaces.

With high exposure to chemicals and water, the pool pump rooms needed a very hard-wearing, non-slip floor surface.

The roof required protection from water, soil and UV exposure. The designers were also seeking a non-reflective finish to avoid impacting nearby residents and motorists.

#### THE SOLUTION

Polyurea WHE110 was selected to waterproof both surfaces. A hybrid polyurea-polyurethane elastomeric waterproof membrane, it is an ideal choice for large commercial projects due to its efficiency, versatility and long life cycle. Comprised of 100% solids, it offers both waterproofing and a protective coating.

Polyaspartic topcoat Nitoflor PA was used to finish all surfaces. It added slip resistance to the floors.

#### THE BENEFITS

##### Polyurea WHE110

- Dual purpose – a waterproofing and protective coating
- Excellent chemical resistance, thermal stability and UV resistance (some discolouration will occur)
- Very fast turn-around time. The coated substrate can be put into service within an hour.
- Fast spray application
- Very low VOC
- Excellent impact, abrasion and puncture resistance
- Seamless and monolithic, including field joints
- Significantly enhances the durability of reinforced concrete
- Low permeability values
- Very long life cycles and high durability

##### Nitoflor PA

- Resistant to chemicals, abrasion and UV
- Slip resistant
- Solvent free
- Convenient 1:1 mix ratio (by volume)
- Fast cure

AU 1800 812 864  
fosroc.com.au

NZ 0800 657 156  
fosroc.co.nz

**Parchem Construction Supplies Pty Ltd**  
1956 Dandenong Rd, Clayton VIC AUS 3168

**Concrete Plus Ltd**  
150 Hutt Park Road, Gracefield NZ 5010

Fosroc, the Fosroc logo and Nitoflor are trade marks of Fosroc International Limited, used under licence.